

ZAXIS-5G series

HITACHI

Reliable solutions

ZAXIS870



5.0 m³ Large Bucket



HYDRAULIC EXCAVATOR

Model Code : ZX870LCH-5G
Engine Rated Power : 360 kW (483 HP)
Operating Weight : 84 700 kg
Backhoe Bucket : ISO Heaped : 5.00 m³

SPECIFICATIONS

ENGINE

| | |
|------------------------|--|
| Model | Isuzu BB-6WG1XQA-04 |
| Type | 4-cycle water-cooled, direct injection |
| Aspiration | Turbocharged, intercooled |
| No. of cylinders | 6 |
| Rated power | |
| ISO 9249, net | H/P mode: |
| (Without Fan) | 360 kW (483 HP) at 1 800 min ⁻¹ (rpm) |
| Piston displacement .. | 15.681 L |

HYDRAULIC SYSTEM

Hydraulic Pumps

| | |
|---------------------|--|
| Main pumps | 2 variable displacement axial piston pumps |
| Maximum oil flow .. | 2 x 512 L/min |

Hydraulic Motors

| | |
|--------------|--|
| Travel | 2 axial piston motors with parking brake |
| Swing | 2 axial piston motors |

Relief Valve Settings

| | |
|-------------------------|-------------------------------------|
| Implement circuit | 31.9 MPa (325 kgf/cm ²) |
| Swing circuit | 28.4 MPa (290 kgf/cm ²) |
| Travel circuit | 34.3 MPa (350 kgf/cm ²) |

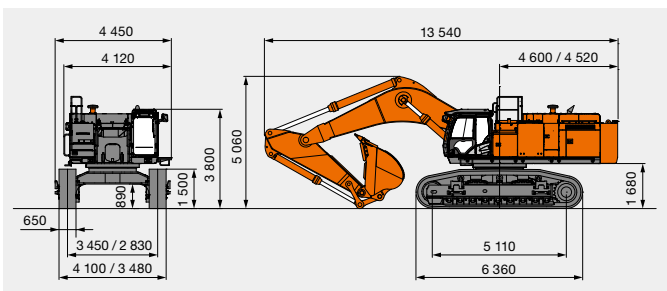
UPPERSTRUCTURE

| | |
|-------------------|-----------------------------|
| Swing speed | 7.4 min ⁻¹ (rpm) |
|-------------------|-----------------------------|

UNDERCARRIAGE

| | |
|---------------------------|--|
| Travel speeds | High / Low : 0 to 4.5 km/h / 0 to 3.0 km/h |
| Maximum traction force .. | 560 kN (57 100 kgf) |
| Gradeability | 70% (35 degree) continuous |

DIMENSIONS



*Excluding track shoe lug

BUCKET AND ARM DIGGING FORCES

| | 7.1 m BE-boom / 2.95 m BE-arm |
|----------------------------------|-------------------------------|
| Bucket digging force* ISO | 472 kN (48 200 kgf) |
| Bucket digging force* SAE : PCSA | 411 kN (41 900 kgf) |
| Arm crowd force* ISO | 394 kN (40 200 kgf) |
| Arm crowd force* SAE : PCSA | 378 kN (38 600 kgf) |

*At power boost

WEIGHTS AND GROUND PRESSURE

ZX870LCH-5G :

Equipped with 7.1 m BE-boom, 2.95 m BE-arm and 5.00 m³ bucket (ISO heaped).

| Shoe type | Shoe width | kg | kPa (kgf/cm ²) |
|----------------|------------|--------|----------------------------|
| Double grouser | 650 mm | 84 700 | 115 (1.17) |

SERVICE REFILL CAPACITIES

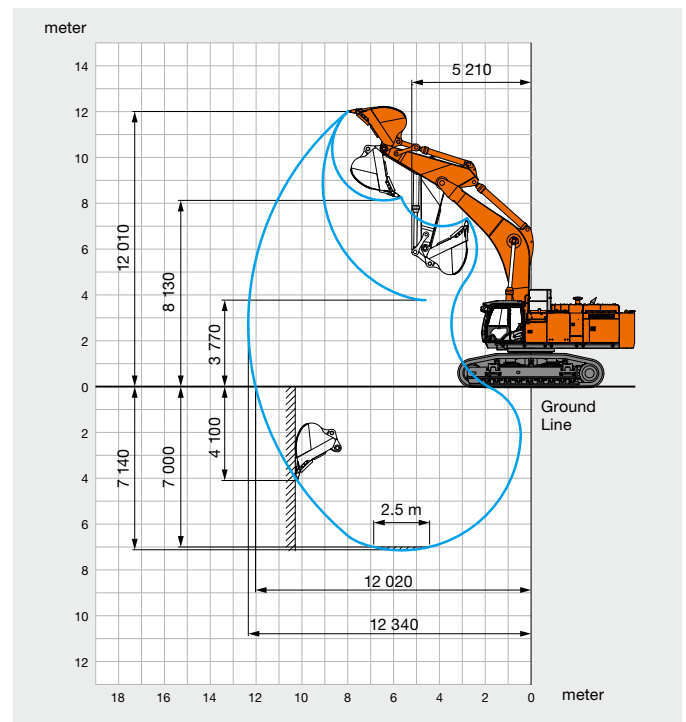
| | |
|---------------------------------|----------|
| Fuel tank | 1110.0 L |
| Engine coolant | 112.0 L |
| Engine oil | 52.0 L |
| Swing device (each side) | 15.7 L |
| Travel device (each side) | 19.0 L |
| Hydraulic system | 1042.0 L |
| Hydraulic oil tank | 500.0 L |

BUCKET

| Capacity | | Width | | No. of teeth | Weight | Recommendation |
|---------------------|--------------------|----------------------|-------------------|--------------|----------|----------------|
| ISO heaped | CECE heaped | Without side cutters | With side cutters | | | 7.1 m BE-boom |
| 5.00 m ³ | 4.4 m ³ | 2 160 mm | 2 260 mm | 5 | 4 560 kg | ⊙ |
| | | | | | | 2.95 m BE-arm |

⊙ Suitable for material with density of 1 800 kg / m³ or less

WORKING RANGES



These specifications are subject to change without notice.

Illustrations and photos show the standard models, and may or may not include optional equipment, accessories, and all standard equipment with some differences in color and features.

Before use, read and understand the Operator's Manual for proper operation.