



H212

Built for performance and speed, the compact and agile H212 delivers big productivity for harvesting, processing and debarking applications. With its robust and nimble design, this all-around capable head is a little giant in the forest.

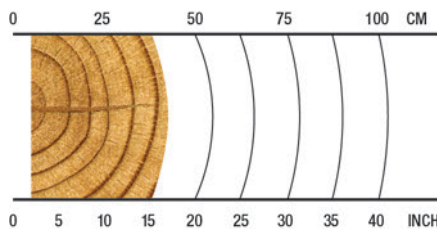
OVERVIEW

Harvesting in early thinnings; productive in crooked or straight wood.

APPLICATIONS

Hardwood harvesting
Softwood harvesting
Multi-tree harvesting
Debarking

RECOMMENDED RANGE



4-40 cm / 1.6-15.7 in.

SPECS



770 kg / 1,698 lb.
Weight (without rotator, link, or multi-tree handling)



28 MPa / 4,061 psi
Max Hydraulic Requirements



500 mm / 19.7 in.
Max Upper Delimb Opening



440 mm / 17.3 in.
Max Feed Roller Opening



520 mm / 20.5 in.
Maximum Cutting Capacity



11-18 metric ton
Carrier Size



8-16 metric ton
Carrier Size

H212 HARVESTING HEAD

SPECIFICATIONS

DIMENSIONS

Height, std tilt frame, without rotator and link (mm/in.)	1360 / 53.5
Width, arms open (mm/in.)	1150 / 45.3
Width, arms closed (mm/in.)	1025 / 40.4

WEIGHT (kg/lb.)

770 / 1698 (Std)
830 / 1830 (Incl. MTH)

DELIMBING

Front knife	Fixed
Maximum opening upper knives (mm/in.)	500 / 19.7
Delimiting diameter tip to tip (mm/in.)	360 / 14.2
Rear knife (mm/in.)	One
Rear knife maximum opening	550 / 21.7

FEEDING

Quantity drive rollers	Two
Maximum feed roller opening (mm/in.)	440 / 17.3
Maximum feed force 398 cc motors (kN/lbf)	20 / 4496
Maximum feed speed (m/s, ft/s)	5.4 / 17.7

HYDRAULIC SYSTEM

Maximum operating pressure (MPa/psi)	28 / 4061
Recommended hydraulic flow (L/min., gal./min.)	180 @ 150 bar / 48 @ 2176 psi
Maximum hydraulic flow (L/min., gal./min.)	270 / 71

SPECIFICATIONS

CUTTING

Maximum felling cut diameter (64cm bar) (mm/in.)	520 / 20.5
Maximum saw bar length (mm/in.)	64 / 25.2
Chain type (mm/in.)	10 / 404
MTH Capacity (measured at DBH) (mm/in.)	2 stems @ 130 / 5.1 3 stems @ 100 / 3.9

OPTIONS

Adaptation to other control systems
Color marking
Stump treatment (through nozzle, saw bar, or both)
Processing upper delimb knives
Multi-tree handling
Saw lubrication (bar oil / greasing option)
HD tilt frame for tracked carriers
Snow protection
Measuring wheel options
Eucalyptus debarking configuration option
Feed Wheels: Eucalyptus debarking; Steel thumbnail; Steel ribbed

