



H225E

Eucalyptus is no match for the purpose-built H225E. Specifically designed for single-pass debarking, this powerful, high-capacity harvester head productively dominates in the harsh application.

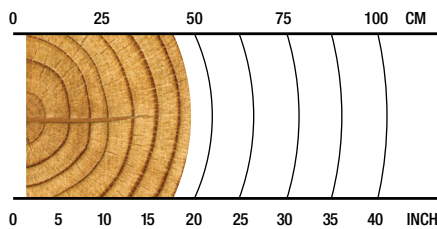
OVERVIEW

Eucalyptus debarking in late or final thinnings or regeneration harvesting.

APPLICATIONS

Debarking

RECOMMENDED RANGE



3-45cm / 1.2-17.7 in.

SPECS



1690 kg / 3,726 lb.
Weight (Option dependent, without rotator & link)



28 MPa / 4,061 psi
35 MPa / 5,076 psi
Maximum Hydraulic Requirements (Option dependent)



540 mm / 21.2 in.
Max Upper Delimit Opening



550 mm / 21.7 in.
Max Feed Roller Opening



550 mm / 21.7 in.
Maximum Cutting Capacity



18-22 metric ton
Carrier Size



20-25 metric ton
Carrier Size

H225E HARVESTING HEAD

SPECIFICATIONS

DIMENSIONS	
Width, head open [mm/in.]	1650 / 65.0
Width, head closed	1200 / 47.2
Height without rotator and link	1900 / 74.8
WEIGHT	
Excluding rotator, link and some options [kg/lb.]	1690 / 3276
DELIMBING	
Delimiting knives	4 moving, 1 fixed, 2 fixed debarking tools
Delimiting diameter, tip to tip [mm/in.]	430 / 16.9
Maximum opening, upper knives [mm/in.]	540 / 21.2
Maximum opening, lower knives [mm/in.]	610 / 24.0
DRIVE	
Quantity of drive rollers	2
Motor cc - option 1	627-cc motors
Gross feed force [kN] (steel feed wheels)	21.2 (@ 280 bar, 260 lpm)
Feed speed [m/s]	5.5 / 18
Gross feed force [kN] (steel feed wheels)	27 (@350 bar, 260 lpm)
Feed speed [m/s]	5.5 / 18
Motor cc - option 2	702-cc motors
Gross feed force [kN] (steel feed wheels)	24 (@ 280 bar, 280 lpm)
Feed speed [m/s]	5.5 / 18
Motor cc - option 3	780-cc motors
Gross feed force [kN] (steel feed wheels)	26 (@ 280 bar, 310 lpm)
Feed speed [m/s]	5.5 / 18
Maximum roller opening [mm/in.]	550 / 21.7
Minimum diameter [mm/in.]	30 / 1.2
BUTT / FELLING SAW	
Standard Saw	SuperCut 100S with auto chain tensioning
Maximum cut diameter [mm/in.]	550 / 21.7
Length of saw bar [mm/in.]	670 / 26
Chain type [mm/in.]	10 / 0.404
Saw motor	20cc
Bar oil tank capacity [L/gal.]	10 / 2.6

SPECIFICATIONS

CARRIER RANGE	
Wheeled [metric ton]	18-22
Tracked [metric ton]	20-25
HYDRAULIC SYSTEM	
Maximum operating pressure [Mpa/PSI]	28 / 4061, 35 / 5076
Recommended pump capacity [l/min.,gal/min.]	260-340, 69-90
CONTROL AND MEASURING SYSTEM	
	TimberRite H-16
OPTIONAL EQUIPMENT	
Stump treatment (through saw bar)	
Aggressive debarking feed rollers	
Chain and saw-bar kits	
In-motor measuring	
Standard Swept Knives (cast)	
HD Big Timber Knives (fabricated)	
Saw bar lubrication w/o tank	
Rotator options	
Straight hoses to boom	
Hoses to bulkhead on tilt frame	
Find-end sensor	

